

General Info

Negative Inserts

Positive Inserts

Ace-Fix Inserts

Threading, Grooving, & Cut-Off Inserts

Ceramic Inserts

PCBN & PCD Inserts

Toolholders

Swiss Toolholders

Boring Bars

Technical Info

ALMT

General Info

Negative Inserts

Positive Inserts

Ace-Fix Inserts

Threading, Grooving, & Cut-Off Inserts

Ceramic Inserts

PCBN & PCD Inserts

Toolholders

Swiss Toolholders

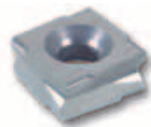
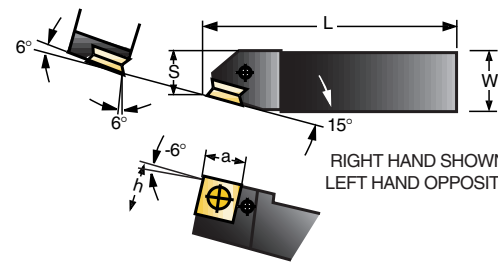
Boring Bars

Technical Info

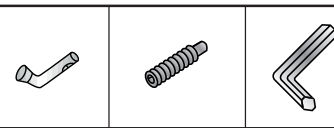
ALMT

W11 Series

For General Turning



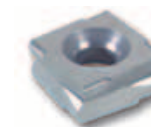
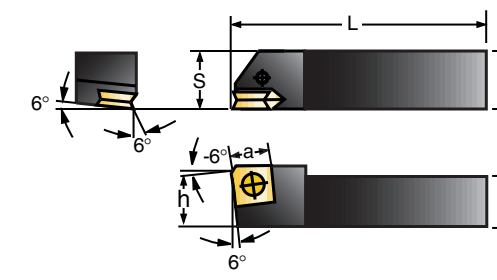
INSERTS
WGG□□-R
WMG□□-R



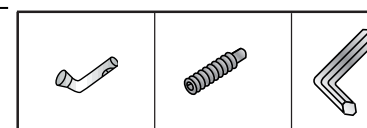
Sumitomo Cat. No.	Hand		Dimensions							Gage Insert		Clamp Stud	Screw	Wrench	
	R	L	W	H	S	h	L	a							
W11R-33U	•		3/4	3/4	.610	3/4	5 1/2	.453			WGG4-R	WMG4-R	SW42R	BTD0607	LH030
W11L-33U		•								WGG4-L	WMG4-L	SW42L	BTD0607		
W11R-44U	•		1	1	.748	1	6 1/4	.571			WGG5-R	WMG5-R	SW53R	BTD0609	
W11L-44U		•													
W11R-45BU	•		1	1 1/4	.945	1 1/4	7	.689			WGG5-R	WMG5-R	SW53R	BTD0609	
W11L-45BU		•													
W11R-55U	•		1 1/4	1 1/4	.945	1 1/4	7	.689			WGG6-R	WMG6-R	SW64R	BTD0812	LH040
W11L-55U		•													

W21 Series

For General Turning



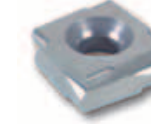
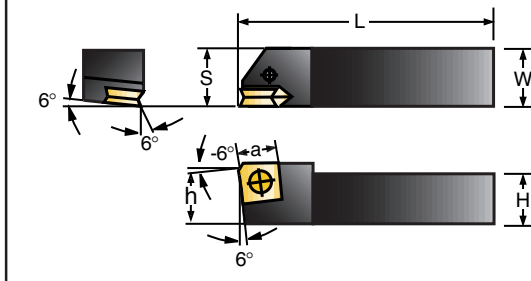
INSERTS
WGG□□-R
WMG□□-R



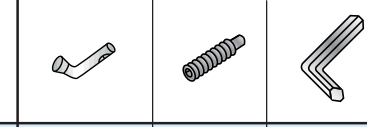
Sumitomo Cat. No.	Hand		Dimensions							Gage Insert		Clamp Stud	Screw	Wrench	
	R	L	W	H	S	h	L	a							
W21R-33U	•		3/4	3/4	.748	3/4	5 1/2	.453			WGG4-R	WMG4-R	SW42R	BTD0607	LH030
W21L-33U		•								WGG4-L	WMG4-L	SW42L	BTD0607		
W21R-44U	•		1	1	.984	1	6 1/4	.571			WGG5-R	WMG5-R	SW53R	BTD0609	
W21L-44U		•													
W21R-45BU	•		1	1 1/4	.984	1 1/4	6 1/4	.571			WGG5-R	WMG5-R	SW53R	BTD0609	
W21L-45BU		•													
W21R-55U	•		1 1/4	1 1/4	1.260	1 1/4	7	.689			WGG6-R	WMG6-R	SW64R	BTD0812	LH040
W21L-55U		•													

W22 Series

For General Turning



INSERTS
WGG□□-R
WMG□□-R



Sumitomo Cat. No.	Hand		Dimensions							Gage Insert		Clamp Stud	Screw	Wrench	
	R	L	W	H	S	h	L	a							
W22R-33U	•		3/4	3/4	.984	3/4	5 1/2	.453			WGG4-R	WMG4-R	SW43	BTD0615	LH030
W22L-33U		•									WGG4-L	WMG4-L			
W22R-44U	•		1	1	1.260	1	6 1/4	.571			WGG5-R	WMG5-R	SW54	BTD0820	LH040
W22L-44U		•													
W22R-45BU	•		1	1 1/4	1.260	1 1/4	6 1/4	.571			WGG5-R	WMG5-R	SW54	BTD0820	
W22L-45BU		•													
W22R-55U	•		1 1/4	1 1/4	1.500	1 1/4	7	.689			WGG6-R	WMG6-R	SW64	BTD0825	
W22L-55U		•													



Ace-Fix geometries yield low horsepower requirements and excellent part finishes at high feed rates.

Ace-Fix & Ace-Fix Mini Toolholders

Boring Bars

- General Info
- Negative Inserts
- Positive Inserts
- Ace-Fix Inserts
- Threading, Grooving, & Cut-Off Inserts
- Ceramic Inserts
- PCBN & PCD Inserts
- Toolholders
- Swiss Toolholders
- Boring Bars
- Technical Info
- ALMT

W25 Series
For General Facing

RIGHT HAND SHOWN
LEFT HAND OPPOSITE

INSERTS
WGG□□-L
WMG□□-L

Sumitomo Cat. No.	Hand		Dimensions							Gage Insert		Clamp Stud	Screw	Wrench	
	R	L	W	H	S	h	L	a							
W25R-33U W25L-33U	•	•	3/4	3/4	.984	3/4	5 1/2	.453			WGG4-L WGG4-R	WMG4-L WMG4-R	SW43	BTD0615	LH030
W25R-44U W25L-44U	•	•	1	1	1.260	1	6 1/4	.571			WGG5-L WGG5-R	WMG5-L WMG5-R	SW54	BTD0820	LH040
W25R-45BU W25L-45BU	•	•	1	1 1/4		1 1/4									
W25R-55U W25L-55U	•	•	1 1/4	1 1/4	1.500	1 1/4	7	.689			WGG6-L WGG6-R	WMG6-L WMG6-R	SW65	BTD0825	

Right hand holder uses left hand insert.
Left hand holder uses right hand insert.

W11 Mini-Series
For General Turning

Right hand shown
Left hand opposite

INSERTS
WGG□□-R
WMG□□-R

Sumitomo Cat. No.	Hand		Dimensions							Gage Insert		Screw	Nut	Cap	Wrench	
	R	L	W	H	S	A	h	L	l	a						
W11R-00U W11L-00U	•	•	3/8	3/8	.335	.472	3/8	2 1/2	1.909	.354	WGG3-R WGG3-L		BFX0410R BFX-410L	MW4R MW4L	CW9	LH025
W11R-11AU W11L-11AU	•	•	1/2	1/2	.472	-	1/2	3 1/2	2.710	.453	WGG4-R WGG4-L	WMG4-R WMG4-L	BFX0511R BRX0511L	MW5R MW5L	CW10	LH030

W21 Mini-Series
For General Turning

Right hand shown
Left hand opposite

INSERTS
WGG□□-R
WMG□□-R

Sumitomo Cat. No.	Hand		Dimensions							Gage Insert		Screw	Nut	Cap	Wrench	
	R	L	W	H	S	A	h	L	l	a						
W21R-00U W21L-00U	•	•	3/8	3/8	3/8	.512	3/8	2 1/2	1.909	.354	WGG3-R WGG3-L		BFX0410R BFX0410L	MW4R MW4L	CW9	LH025
W21R-11AU W21L-11AU	•	•	1/2	1/2	1/2	-	1/2	3 1/2	2.710	.453	WGG4-R WGG4-L	WMG4-R WMG4-L	BFX0511R BFX0511L	MW5R MW5L	CW10	LH030